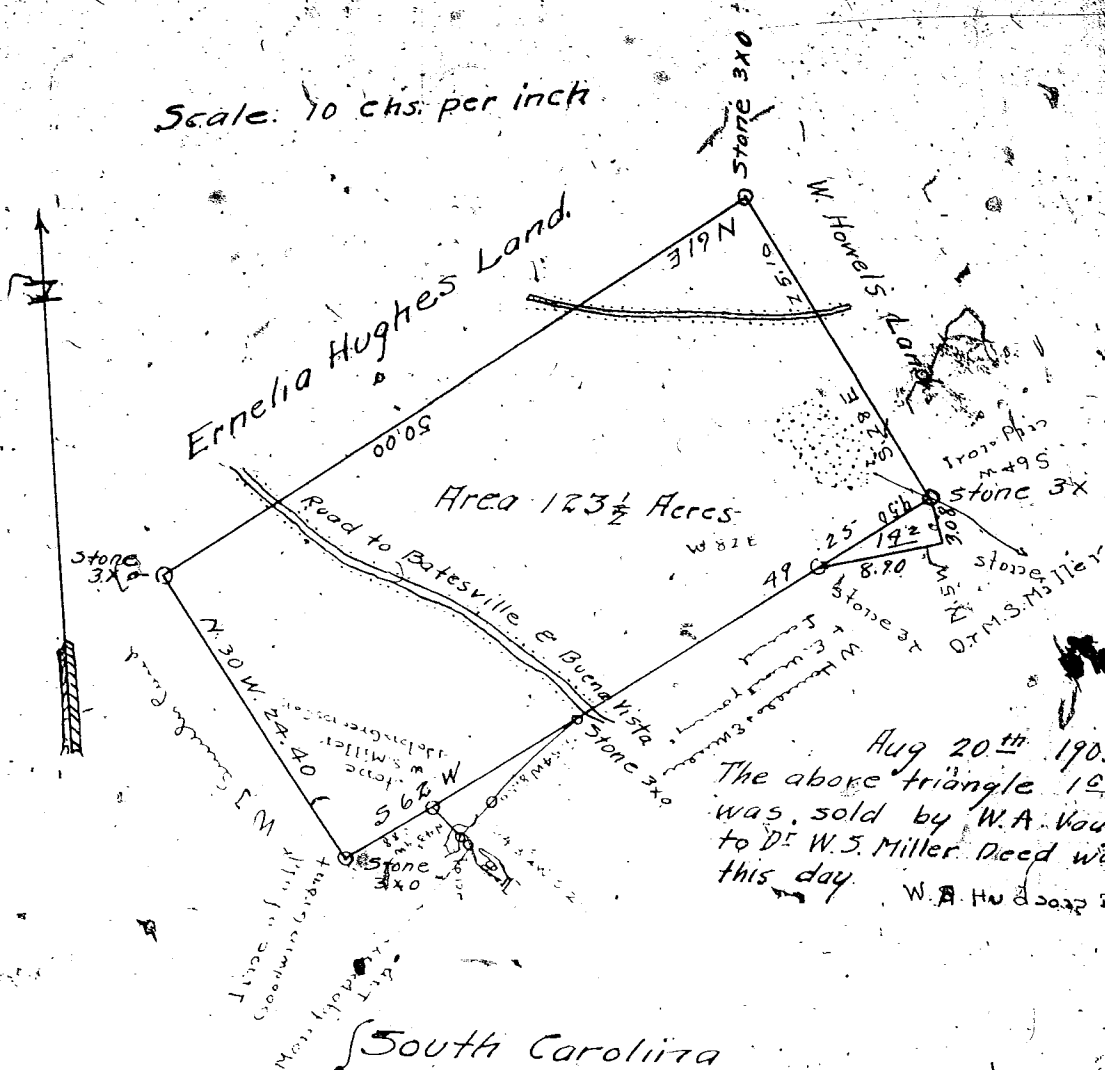


Scale: 10 chs. per inch



Aug 20th 1903
 The above triangle 102 Acres
 was sold by W.A. Vaughn
 to D.F. W.S. Miller. Deed was made
 this day.
 W.A. Hu & Co. D.S.

{ South Carolina
 Greenville District }

By request of Edmund Miller I have surveyed a tract or plantation of land situated in the district and state before mentioned on the branch waters of the Rocky Creek of Enoree River containing One hundred and twenty three and one half Acres and hath such marks, shape and boundaries as the above plat represents.

Surveyed 9th of March 1863.

Note: the corner shown by the hand pointer, is .52 Links outside the present corner and is on the end of the Montgomery Line as surveyed by W.A. Adams April 6th 1912.

